



Photo Gallery of Non-Human Primates

The last few years has brought an increase in bans on the private ownership of non-human primates in the USA. The current trend is “fear of the unknown”; if it sounds exotic, then it needs to be banned. We are hoping to reverse this trend with this educational flyer on non-human primates.

Commonly Kept Captive Monkeys and Lemurs – partial list

		<p>Ring-Tailed Lemur (Lemur catta)</p> <p>Size: Head and body, 17.75 in (45 cm); Tail, 21.75 in (55 cm) Weight: 5 to 7.5 lbs (2.3 to 3.4 kg)</p>
		<p>Geoffroy's Marmoset (Callithrix geoffroyi)</p> <p>SIZE Length: Body approximately 20 cm (8 in). Tail 26-28 cm (10-11 in) Weight: 190-350 g (0.4 - 0.77 lb)</p>

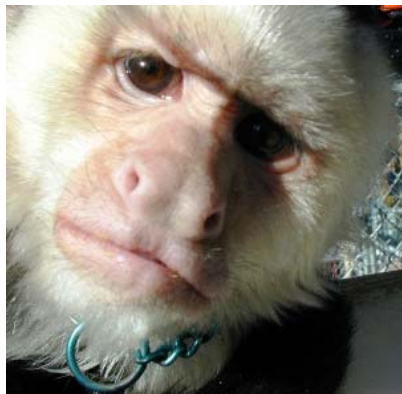


**Squirrel
Monkey
(Saimiri)**

Height: 10.6
to 12.5 in (M
& F)
Weight: 1.43
to 2.75 lb (M),
1.43 to 1.98
lb (F)



Black-capped Capuchin



Black and White Capuchin

**Capuchin
Monkey
(Cebus)**

Height: 17.48
in (M), 15.35
in (F)

Weight: 6.49
lb (M), 4.58 lb
(F)



**Capuchin
Monkey
(Cebus)**

**Height: 17.48
in (M), 15.35
in (F)**

**Weight: 6.49
lb (M), 4.58 lb
(F)**



**Black-capped Capuchin (above
and on the left)**



**Spider
Monkey
(Ateles)**

**Height: 1.83
ft (M), 1.81 ft
(F)**

**Weight: 23.8
lb (M), 21.3 lb
(F)**





Pigtail macaque



Rhesus macaque

Macaque Monkeys

Weight: 8 to 35 pounds depending on the gender and species

Head & Body: 15 to 31"



Black macaque



Celebes crested macaque



Japanese snow macaque



Celebes crested macaque



Java macaque



Java macaque